

# adli4000 Pressure Transmitter



Instrument & Equipment Specialties Inc.  
Address: Suite 804, 1220 N. Market Street, Wilmington, Delaware 19801, USA  
Tel.: +1-302-268-6176 E-mail: [info@INEQ-global.com](mailto:info@INEQ-global.com)  
Fax.: +1-302-268-6176-0 [www.INEQ-global.com](http://www.INEQ-global.com)

Accuracy:  $\leq \pm 1\%$  of F.S.

Output: 4...20mA	2-wire system
0...10VDC	3-wire system
0.5...4.5VDC	3-wire system

Measuring Ranges: -1...+400bar

## Description

Robustness and long-term stability during operation are the strengths of this compact pressure transmitter for refrigeration technology. The technical specifications and attractive price level of these transmitters make them ideal for OEM applications.

High chemical resistance against usual refrigerants as well as condensation tightness under hardest operating conditions characterise the compact pressure transmitters. Welded connections between pressure cell and process connection require no sealing elements and make the measuring system particularly resistant to mechanical shock and vibration. The compact design makes these transmitters interesting for space critical applications.

## Features

High Stability of the load resistance

Dynamic and static load measurement

Condensation tightness

High chemical resistance

Welded without sealing parts, no elastomer seals

OEM Application

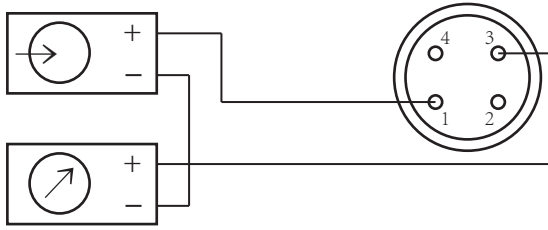
## Technical Data

Pressure Type	Positive or Negative Gauge Pressure	
Measuring Ranges	-1...400bar	
Pressure Connection	G1/4, R1/4, Others on request	
Electrical Connection	M12*1, P9, others on request	
Overrange	≤40bar 2x ; >40bar 1.6x	
Sensor Element	Thin Film	
Power Supply Depends On Output Signal	Power Supply	Maximum Load RA
4...20mA	10...30V	
0...10V	14-30V	RA > 10 kohm
0.5...4.5V	5±0.5V	RA > 4.5 kohm
Linear Accuracy	≤±1% (IEC 61298-2)	
Repeatability Accuracy	≤0.3%	
Response Time	≤5 ms inside of 10%-90% of range	
Certificate	CE, ROHS	
Temperature Influence	Zero Point ≤ 0.5%/10K ≤ Span 0.3%/10K	
Temperature	Compensated Temperature Range	-25...80°C
	Storage	-25...80°C
	Medium	-40...80°C
Material	Case: Stainless Steel	
Weight	About 80g	

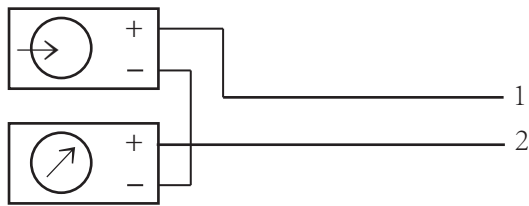
4  
0  
0  
0

## Electrical Connections

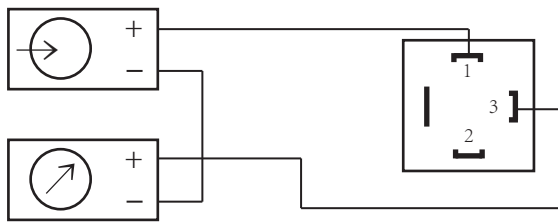
### 2-wire M12X1



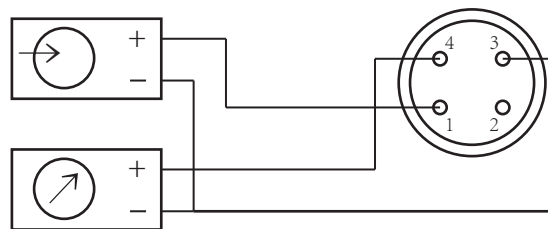
### 2-wire moulded cable connection



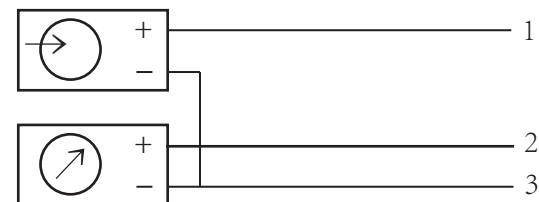
### 2-wire DIN EN 175301-803



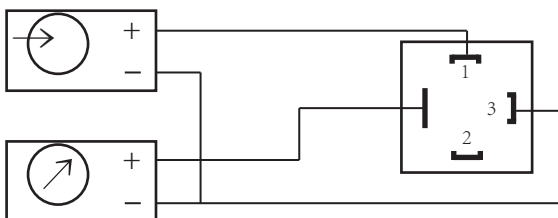
### 3-wire M12X1



### 3-wire moulded cable connection



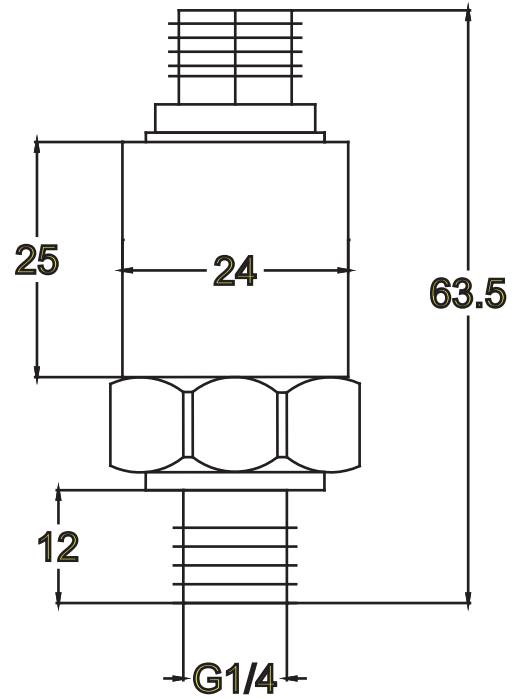
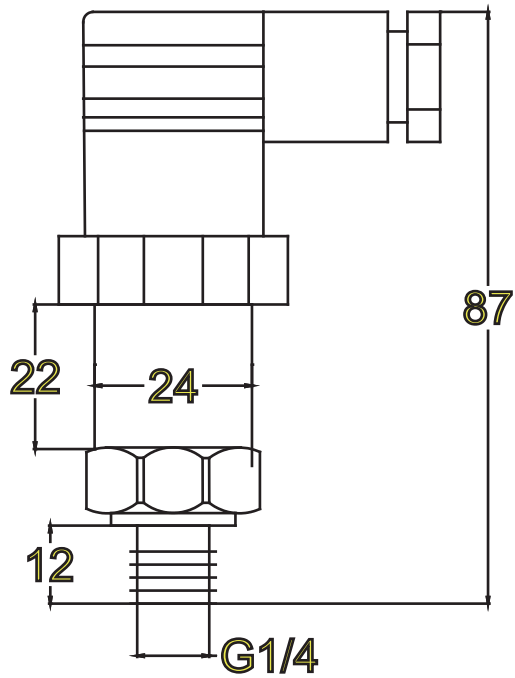
### 3-wire DIN EN 175301-803



Dimensions (mm)

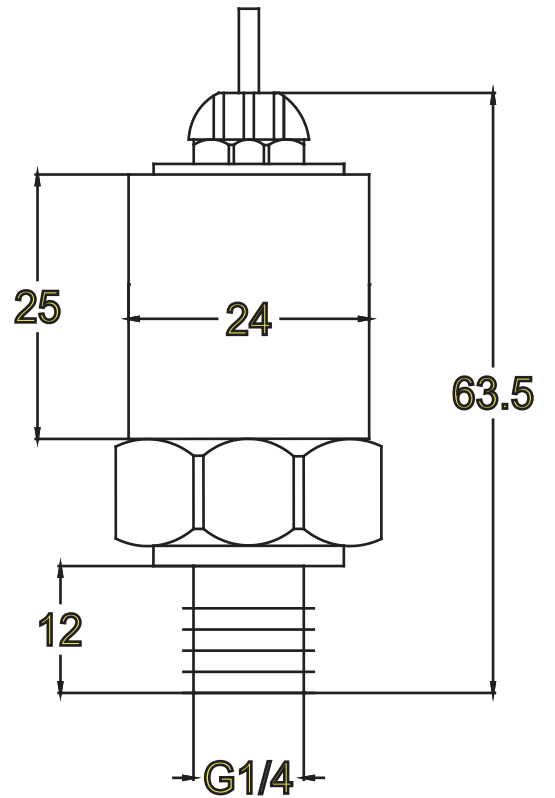
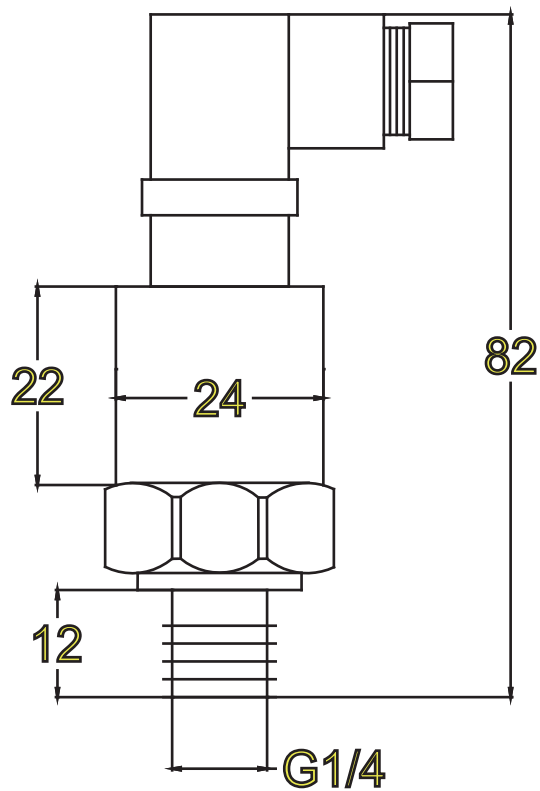
DIN EN 175301-803 A

M12X1



DIN EN 175301-803 C

Moulded cable connection



Model: adli4000

4	0	0	8	1	7	6	0	0	1		
										4: Series	
										Temperature	0: -40...80 °C 3: -40...135 °C
										Electronic connection	0: M12*1 3: DIN EN 175301-801 C 5: moulded cable 7: DIN EN 175301-801 A
										Accuracy	6: 0.5% 8: 1%
										Pressure connection	0: G1/2 1: G1/4 2: R1/4 3: NPT1/2 4: R1/2 5: M20*P1.5
										Pressure range (bar)	16: -1...0    40: -1...1 41: -1...2    44: -1...3 45: -1...5    46: -1...9 49: -1...15    69: 0...1 70: 0...1.6    72: 0...2.5 73: 0...4    74: 0...6 75: 0...10    76: 0...16 78: 0...25    79: 0...40 80: 0...60    81: 0...100 82: 0...160    84: 0...250 85: 0...315    86: 0...400
										Signal output	0: 4...20mA 1: 0...10V 2: 0.5...4.5V
										Custom	0: Standard 1: Customed
										On request	0: Requests 1: No